

### What's in the box

Instruction manual  
1.8KW Smart Ceramic  
Desk Heater  
Remote control

### Features

Remote control  
Digital LED display  
360 degree heating  
Two heat settings  
(900W/1.8kW)  
with fan boost setting  
Thermostat adjustable  
between 10 and 35°  
Wi-Fi control option via  
the BLACK+DECKER  
Home App  
Google assistant and  
Amazon Alexa enabled  
ECO function  
24 hour timer  
Dual overheat protection  
Tip over switch  
Child lock

### Control panel

Power indicator  
Child lock indicator  
Timer indicator  
Heat setting indicators  
Fan indicator  
Wi-Fi indicator  
ECO ECO indicator  
1. Numerical display  
2. Arrow up key  
3. Arrow down key  
4. M key (for cycling  
through heat settings)  
5. ECO mode key  
6. Timer key  
7. Power key  
8. Child lock key  
9. Wi-Fi key

### Remote control

1. Power button  
2. Wi-Fi button  
3. M button (for cycling  
through fan settings)  
4. Arrow up button  
5. Arrow down button  
6. ECO button  
7. Timer button  
8. Child lock button

### Intended use

Your BLACK+DECKER BXSH37030GB 1.8KW Smart Ceramic Desk Heater has been designed and is intended for indoor household use only.

Thank you for choosing BLACK+DECKER. We hope that you will enjoy using this product for many years.

### Safety instructions

**⚠WARNING:** Read all safety warnings and all instructions. Failure to follow the warnings and instructions listed below may result in electric shock, fire and/or serious injury.

- ◆ Read this manual carefully before using the appliance.
- ◆ The intended use is described in this manual.
- ◆ The use of any accessory or attachment or the performance of any operation with this appliance other than those recommended in this instruction manual may present a risk of personal injury.
- ◆ Retain this manual for future reference.

**⚠WARNING:** When using mains powered appliances, basic safety precautions, including the following, should always be followed to reduce the risk of fire, electric shock, personal injury and material damage.

### Using Your Appliance

Please read the operating instructions carefully before using your appliance for the first time.

- ◆ Check that the voltage of the main circuit corresponds with the rating of the appliance before operating.
- ◆ Do not let the cable hang over the edge of a table or counter or let it come into contact with any hot surfaces.
- ◆ The use of accessory attachments is not recommended by the appliance manufacturer, apart from those supplied with this product.
- ◆ Do not pull the plug out by the cable as this may damage the plug and/or the cable.
- ◆ Do not use this product for anything other than its intended use.
- ◆ Do not carry the appliance by the power cable.
- ◆ Do not use the appliance outdoors.
- ◆ Do not operate with wet hands.
- ◆ Use of an extension cable with this appliance is not recommended. However, if it is necessary to use an extension lead, ensure that the lead is suited to the power consumption of the appliance to avoid overheating of the extension cable, appliance or plug point. Do not place the extension cable in a position where it can be pulled on by children or animals or tripped over.
- ◆ The manufacturer does not accept responsibility for any damage or injury caused by improper or incorrect use, or for repairs carried out by unauthorised personnel.

## Safety of others

- ◆ Close supervision is necessary when any appliance is used near children.
- ◆ Children should not play with the appliance.
- ◆ This appliance is not intended for use by persons (including children) with reduced physical, sensory or mental capabilities, or lack of experience and knowledge, unless they have been given supervision or instruction concerning use of the appliance by a person responsible for their safety.
- ◆ Children should be supervised to ensure that they Do not play with the appliance.
- ◆ Take care when any appliance is used near pets.
- ◆ Do not allow the cord to become twisted.

## After use

- ◆ While cleaning, Do not use a wet cloth or use water on any part of the unit, as this may cause a short circuit or electrical shock.
- ◆ Keep this unit clean. Do not allow objects to enter the ventilation opening as this may cause electric shock, or damage to the unit.
- ◆ Check all inlets and outlets regularly for accumulated dust.
- ◆ Disconnect the unit from the mains outlet when it is not in use, or before relocating or cleaning it.

- ◆ Switch off and remove the plug from the socket before leaving the appliance unattended and before changing, cleaning or inspecting any parts of the appliance.
- ◆ When not in use, the appliance should be stored in a dry place. Children should not have access to stored appliances.

## Inspections and repairs

- ◆ Do not attempt to dismantle, repair or remould any part of the unit. This should only be done by a qualified BLACK+DECKER service facility. Even the change of power cable should be done by a qualified person.
- ◆ In the unlikely event the appliance develops a fault, stop using it immediately and seek advice from a qualified BLACK+DECKER service facility.
- ◆ In case of technical problems, switch off the product and do not attempt to repair it yourself. Return the appliance to an authorised BLACK+DECKER service facility for examination, adjustment or repair. Always insist on the use of original spare parts. Failure to comply with the above mentioned precautions and instructions, could affect the safe operation of this product. Further information about authorised BLACK+DECKER service facilities can be found on [www.2helpu.com](http://www.2helpu.com)

### Additional safety instructions for this appliance

- ◆ Always ensure that the heater is placed on a firm level surface. Ensure that the heater is not positioned close to curtains, furniture or any combustible materials as this could create a fire hazard.
- ◆ The heater must not be located immediately below a mains socket outlet.
- ◆ Always use the heater in an upright position.
- ◆ This product is only suitable for well-insulated spaces and occasional use.
- ◆ Do not cover the heater as this may lead to a fire risk.
- ◆ Do not obstruct any of the openings of the heater.
- ◆ Do not insert any object through any openings on the heater.
- ◆ Check all inlets and outlets from time to time for accumulated dust.
- ◆ Do not use the heater in areas where flammable liquids are stored or where flammable fumes may be present.
- ◆ Do not operate the heater on a timer, or leave on overnight.
- ◆ Do not use the heater to dry your laundry. Never obstruct the intake and outlet grills as there is a danger of overheating.
- ◆ Do not use the appliance in rooms less than 4m<sup>2</sup>.

- ◆ When not being used, please unplug the heater from the mains socket.
- ◆ Keep the mains lead away from the hot body of the heater and ensure that it is not pulled tight between the socket and the heater.
- ◆ Do not use the heater in the immediate surroundings of a bath, a shower, a swimming pool or similar indoor locations.
- ◆ Always unplug the heater and allow it to cool before moving it from one location to another.
- ◆ Do not attempt to dismantle or repair any part of the heater. This should only be done by a qualified service agent.

**NOTE:** Smoke may emit from the unit on first use. This is due to oils used during production, and is not indicative of malfunction.

- ◆ In the unlikely event the appliance develops a fault, stop using it immediately and seek advice from the Customer Support Team.

## Electrical safety

**⚠WARNING:** Before use, check that the mains voltage corresponds to the voltage on the rating plate.

- ◆ Appliance plugs must match the outlet. Never modify the plug in any way.
- ◆ Do not use any adapter plugs with this appliance. Unmodified plugs and matching outlets will reduce the risk of electric shock.
- ◆ To avoid the risk of electric shock, Do not immerse the cord, plug or appliance in water or other liquid.

**⚠WARNING:** Before assembling, switch the appliance off and remove the plug from the socket.

## Mains plug replacement

**⚠WARNING:** The below section on mains plug replacement is for authorized service centre persons.

If a new mains plug needs to be fitted:

- ◆ Safely dispose of the old plug.

## USE

### Before first use

**NOTE!** Read all instructions and safety information carefully before first use. Please retain this information for future reference.

- ◆ Remove your appliance from the packaging.
- ◆ Check that there is no damage to the cord or any visible damage to the body or accessories.
- ◆ Dispose of the packaging in a responsible manner.
- ◆ Place your heater on a flat, level surface away from walls or anything that is likely to be damaged or be set alight by hot air.
- ◆ Plug the appliance into the mains supply.
- ◆ Your appliance is now ready for normal use.




## USING YOUR APPLIANCE

### Turning on your appliance

Ensure that the heater is placed on a flat surface and is correctly plugged into the mains electricity. Once the product is plugged into the mains, a beep will be heard, and the LED display will light up. Press the power touchscreen key to turn on the appliance. To turn the appliance off, simply press it again. When the heater is on standby, the LED display will show “--- ---”.

### Setting the appliance's heat settings manually

The heater can be set in units of one degree between 10 and 35 Celsius. Use the arrow up and down keys to set the desired temperature.


The device has two heat settings,  for half heat, and  for full heat. There is also a FAN  setting for circulating room temperature air. Please note that the FAN icon is always displayed. The unit is in FAN mode when only FAN is displayed, and no heat icons are visible. To cycle between the three modes, simply press the M key until your desired setting is achieved.

## ECO Mode


If ECO is pressed, then the heater will automatically adjust its heat output between low and high, and will turn off once the ambient room temperature matches that of the setting on the heater, turning on again if the temperature drops again.

### Timer function





The heater has a function which allows you to set a timer between 1 and 24 hours. After the time is up, the heater will automatically turn off. Weekly Timers can be activated using the BLACK+DECKER Home App via the 'Scene' automations. The date, hour and minute can be chosen to turn the heater off.

To set the timer, simply press the  key. The LED display will show “00”, showing that the timer is not set. To set the timer, simply press the arrow up and down keys to set the desired number of hours.

Once the desired number of hours has been selected, wait for the LED display to flash four times, and it will go back to displaying the temperature.

To cancel the timer, simply press the  key again and bring the number of hours back to 00. Wait for the LED display to flash four times, and the timer will be cancelled.

### Child lock

For safety reasons, the appliance has a child lock setting which locks off the touchscreen to prevent children from accidentally changing the settings. To activate the child lock, simply hold down the  key for three seconds. When the child lock is activated, a beep will be heard, and  will show up on the LED display. To deactivate child lock, simply press  for three seconds, and a beep will be heard. The  icon will disappear from the display once child lock is deactivated.

### Power down/standby

Press the power key to turn off the heater. The heater will display a 30 second timer once it is powering down.

After 60 seconds of inactivity, the LED display will automatically go into a low light state. To get the appliance out of this state, simply press any key.

Always remove appliances from the mains after use.

## Using the remote

The unit comes as standard with a remote which allows you to control the heater without having to use the unit's LED touchscreen.

All remote buttons work identically to the buttons on the unit's LED display, as detailed in the "Using your appliance" section.

## Wi-Fi FUNCTIONALITY

### Connecting to Wi-Fi/downloading the app:

- ◆ To start using the 'BLACK+DECKER Home' app, begin by downloading it from the Apple App store or the Google Play store. Scan the QR Codes shown below to download the app directly from either store.



- ◆ Follow the instructions in the app to create an account and connect the heater to a Wi-Fi network.

**▲ NOTE!** Other app and device instructions are also available in the app.

- ◆ Once the app is downloaded, carry out the following steps to control the unit remotely through the corresponding smart device.

### Connecting the app to the unit:

- ◆ Install the "BLACK+DECKER Home" app and create a user account, as detailed above.
- ◆ Plug the appliance in. This will activate the Wi-Fi function.
- ◆ Place the appliance within 5 metres of your router.
- ◆ As long as the unit remains plugged in, the Wi-Fi indicator flashes.

## Wi-Fi connection

- ◆ Ensure the product is turned on.
- ◆ The Wi-Fi function will automatically activate and the indicator will flash.
- ◆ When the Wi-Fi indicator flashes, select 'Add Device' and follow the instructions on the display.
- ◆ If the Wi-Fi indicator flashes, the unit can be connected to the BLACK+DECKER Home App.

### Configuring different SSD bands for 2.4GhZ and 5GhZ

- ◆ If your router supports both the 2.4GHz and 5GHz bands, but only one Wi-Fi name is displayed on the Wi-Fi search page of your mobile phone, perform these steps:

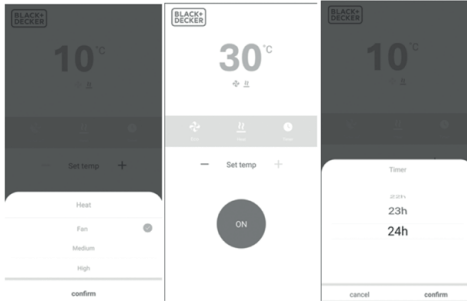
1. Go to the Wireless page of the router. (The entry address is usually provided on the label attached to the back of the router).
2. Go to the 2.4GHz setting page, and set the Wi-Fi name (SSID) to XXX—2.4G, where xxx indicates the Wi-Fi name. Save setting.
3. Go to the 5GHz setting page, and set the Wi-Fi name (SSID) to XXX—5G, where xxx indicates the Wi-Fi name. Save setting.

- ◆ When the preceding settings are complete, the new Wi-Fi names will appear on the Wi-Fi settings page of your mobile phone.

**NOTE!** After the Wi-Fi names are changed, you need to reconnect the devices that use this wireless router. The password remains the same if it has not been changed.



## Using the app once it has downloaded:



Carry out the following steps to control the unit remotely through the corresponding smart device.

1. Tap the Power On/Off key to turn the unit on or off.
2. Tap the + and – keys to increase or decrease the temperature levels. The current temperature level is displayed above the two keys.
3. Tap the Timer On key to access the timer screen. In the new screen, click Add Timer to program and set a timer.
4. Tap the Heat key on the app's Selection screen to switch between settings (Fan, Low Heat and High Heat).
5. Tap the Eco key to on the app's Selection screen to toggle Eco mode.

## Automation and tap to run features

The Tap to Run functionalities allow you to save your favourite combination of device settings and then access them on your device via the BLACK+DECKER app, allowing you to quickly operate and change multiple settings in a hassle-free and accessible manner.

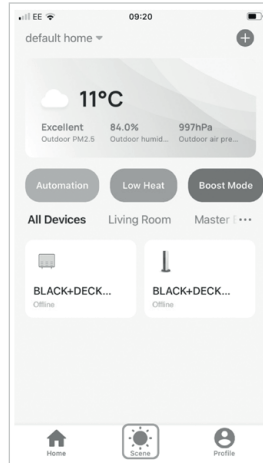
### Automation

Automation allows you to set parameters that will automatically trigger and then change your device's mode.

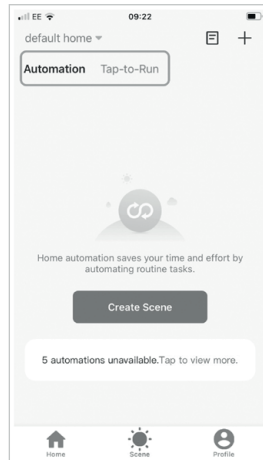
You can set parameters which relate to changes in local weather, schedules, or device status changes.

The BLACK+DECKER Home App allows you to customise the operation of your smart BLACK+DECKER product. Log into your account on the app and ensure your product has been added by following the steps highlighted in this instruction manual.

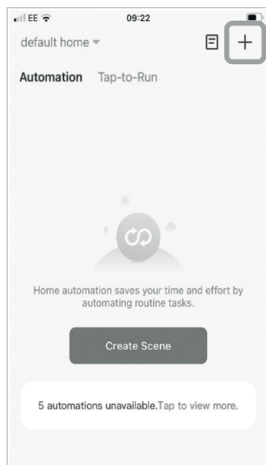
Once connected, proceed to the 'Scenes' button on the bottom banner of the home page.



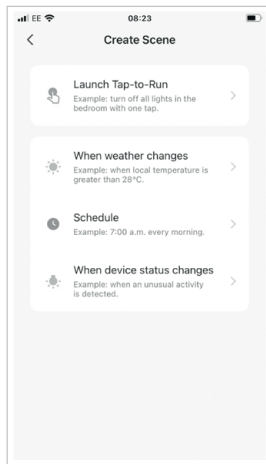
Once the Scenes button has been pressed, you will be taken to the overview Scenes page which is broken down between 'Automations' and 'Tap to Run'. You can switch between Automations and Tap to Run by clicking the top banner text for these options. On your first view the page will be blank until you have set up configuration.



To add a Tap to Run or Automation while on the Scenes page, simply press the + icon, located in the top right hand corner.

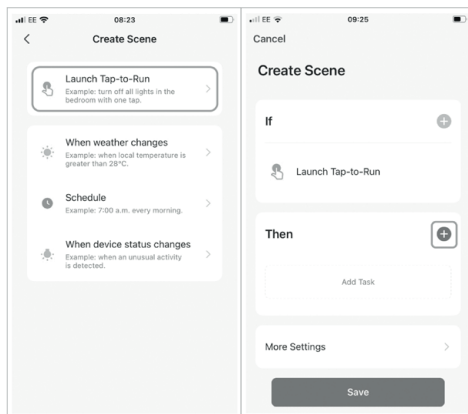


The following page is where you can select whether to create a Tap to Run or Automation, which is split into two sections. The top function relates to tap to run and the bottom section for Automations.



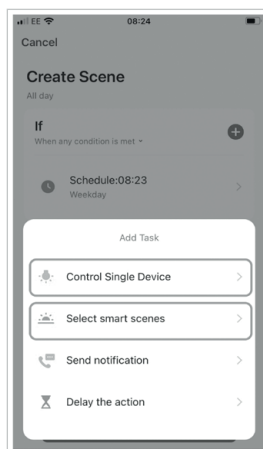
## Setting up a tap to run feature

Press 'Launch Tap-to-Run'. This will take you to the next page, which shows 'If' and 'Then'. The 'If' plus icon will be greyed out. You then need to press the plus icon within the 'Then' field.



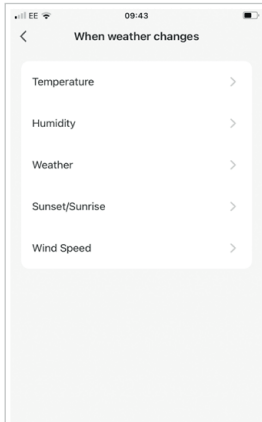
This will take you to a drop down list where you can select the type of action you would like the Tap-to-Run to activate.

This consists of 'Control Single Device' where options such as turn on/off can be selected or 'Select Smart Scenes' where you can select a pre-existing automation to enable or disable. Once selected, press save. Your set up Tap to Run will then appear in the overview page under Tap to Run.



To set up an Automation, press the plus icon on the scenes page.

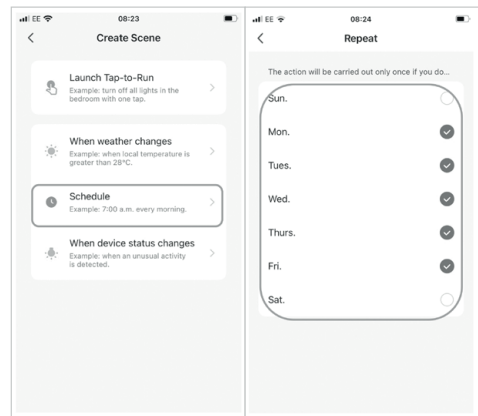
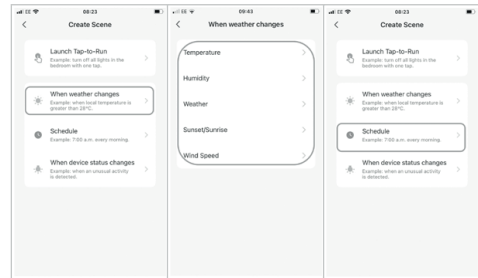
Select parameters either 'When Weather Changes' or Schedule for your automation. When choosing the 'When Weather Changes' option the following list will appear where you can select the parameters for an action to begin.



Once an option from the above list has been selected, the 'If' section will be filled in, and you can then decide on the 'Then' action by pressing the plus icon.

This will show a drop down list where you can control a device's features, such as turning it On or Off, selecting a smart scene already set up, sending notification or delaying action. Once selected press Save and name the Automation. This will then appear in the Automations Overview and will automatically operate, unless turned off by the toggle button.

The 'Schedule' options allows you to make your device a weekly programmable timer by selecting the day, hour and minute. You can then decide on the 'Then' action by pressing the plus icon.



## Troubleshooting:

Questions	Answers
Why is the product not turning on?	Ensure that the product is plugged into the mains correctly.
Why is the product not producing enough heat although it is turned on?	Ensure the product is in heat mode by pressing "M" until there are flame icons displayed on the screen. The product is only in fan mode if there are no red flames displayed. Ensure that the product is plugged correctly into the mains.
The product keeps turning off	The product has a safety cut-out switch which automatically turns the unit off if tilted for safety reasons. Ensure that the product is upright before turning on again. Ensure the product is correctly plugged into the mains.
The product is not responding to any touchscreen commands	The child lock is on. Hold down the lock icon for three seconds, and the unit will beep. The lock icon will also disappear from the LED display.

## Voice commands:

Type	Action	Voice Commands

## Cleaning and maintenance:

**⚠ WARNING!** Before cleaning and maintenance, switch the appliance off and remove the plug from the socket to prevent electric shock.

- ◆ Do not immerse any part of the appliance, power cord or plug in liquids.
- ◆ Use a vacuum cleaner to remove dust on grilles.
- ◆ Use a soft damp cloth to wipe the surface. Avoid using detergent, spray or chemicals as these may cause damage to the appliance.

## To store your appliance:

1. Always disconnect the appliance, let it cool down completely and clean it before storing.
2. When the unit is not in use, store it in its original box in a cool, dry place.
3. Do not place any heavy items on top of the box during storage as this may damage the appliance.

## Protecting the environment



Separate collection. Products and batteries marked with this symbol must not be disposed of with normal household waste.

Products and batteries contain materials that can be recovered or recycled, reducing demand for raw materials. Please recycle electrical products and batteries according to local provisions. Further information is available at [www.2helpU.com](http://www.2helpU.com).

## Technical data

		BXSH37030GB
Input voltage	V AC	220-240
Frequency	Hz	50-60
Power input	W	900/1800
Weight	KG	1.9KG

## Product guarantee

This product comes with a 2 Year guarantee. If any defect arises due to faulty materials of workmanship, the faulty products must be returned to the place of purchase. Refund or replacement is at the discretion of the retailer. This guarantee is in addition to and in no way prejudices your statutory rights.

### The following conditions apply:

- ◆ The product must be returned to the retailer with proof of purchase or a receipt within 2 years of purchase. For any product related issues after 24 months please contact our customer services team.
- ◆ The product must be installed and used in accordance with the instructions contained in this instruction guide.
- ◆ It must be used only for domestic purposes.
- ◆ It does not cover wear and tear, damage, misuse or consumable parts.
- ◆ This guarantee is valid in the UK and Republic of Ireland.

## Product security and telecommunications infrastructure (PSTI)

Your BLACK+DECKER 1.8kW Smart Ceramic Desk Heater is an interconnected product which uses both Wi-Fi and Bluetooth to connect to the BLACK+DECKER Home App. As more devices in the home become connected to the internet, cyber security of the Internet of Things (IoT) is increasingly important to protect end users.

The BLACK+DECKER 1.8kW Smart Ceramic Desk Heater will deliver an updated experience on a regular basis including security patches. It is strongly recommended for best performance and security that all maintenance updates should be accepted as soon as possible. 1.8kW Smart Ceramic Desk Heater will continue to update until the specified date found within the Software Update website address. Please note updates may well continue after the date but it is likely that they will be less frequent. For further information please visit the below links.

For Security Reporting, BLACK+DECKER actively tries to identify and reduce potential vulnerabilities during the products lifetime and in this effort we value input on actual or potential vulnerabilities reported by yourself.

If you believe you have discovered a vulnerability in a BLACK+DECKER product please follow the Security Report website address below and follow the steps to complete the Security Reporting Form. Further information regarding the process is referenced on our website.

Security Reporting Website Address:  
[www.rkwltd.com/#/security-reporting](http://www.rkwltd.com/#/security-reporting)

Software Updates Website Address:  
[www.rkwltd.com/#/software-updates](http://www.rkwltd.com/#/software-updates)



ENGLISH

(Original instructions)

(Original instructions)

ENGLISH





ENGLISH

(Original instructions)